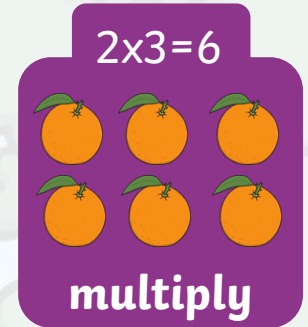
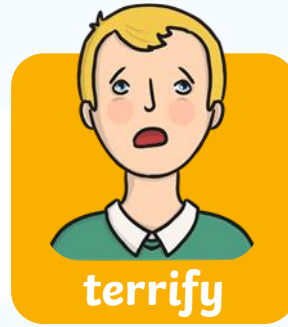
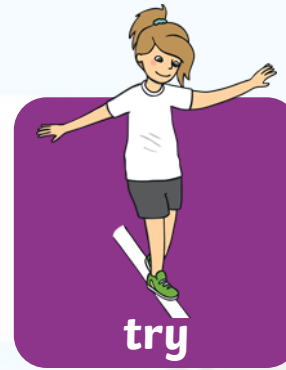


# The /igh/ Sound Spelt With '-y'

twinkl

# /igh/ Spelt '-y'

The /igh/ sound at the end of these words is spelt with '-y'.



# /igh/ Spelt '-y'

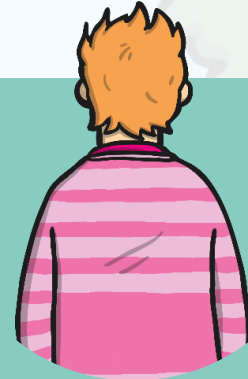
The /igh/ sound at the end of these words is spelt with '-y'.



Can you air write an  
'-y' with your finger?



Can you write an  
'igh' on the back  
of your hand?



Can you write either  
an 'y' or an 'igh' on a  
partner's back?

Can they tell  
what letters you  
have written?

# Be careful!

The sound /igh/ sound is **usually only** spelt with '-y' at the end of a word.



cry



terrify



dry

Here are this week's spellings to practise.

cry

fly

dry

try

reply

sly

shy

terrify

sky

multiply

twinkl