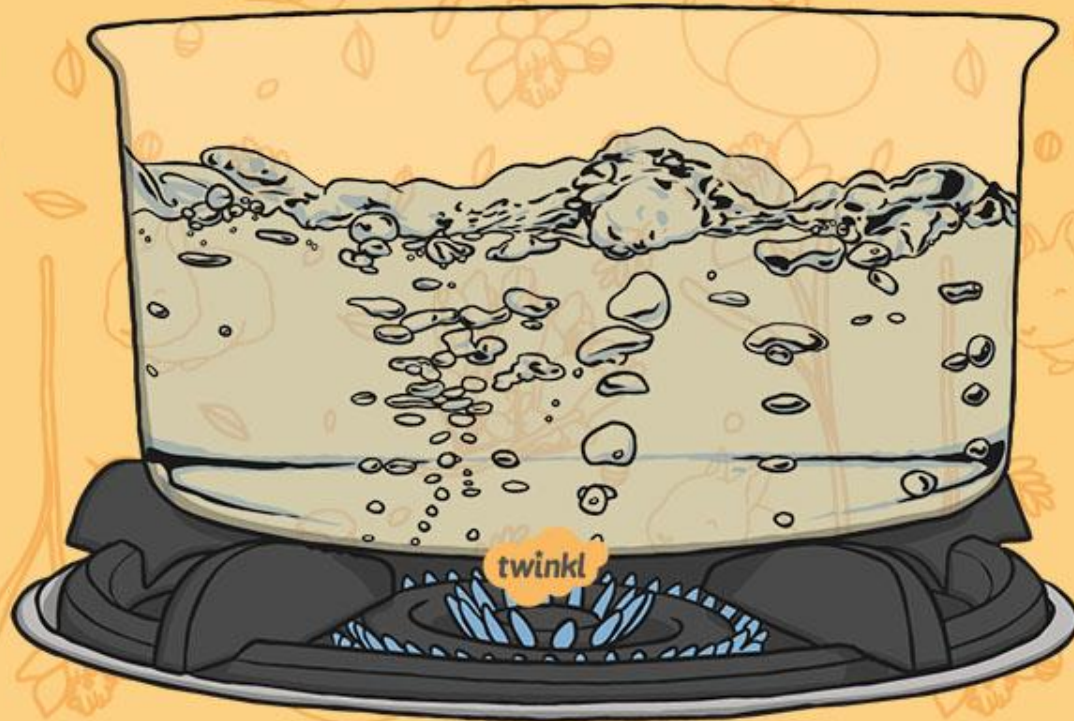
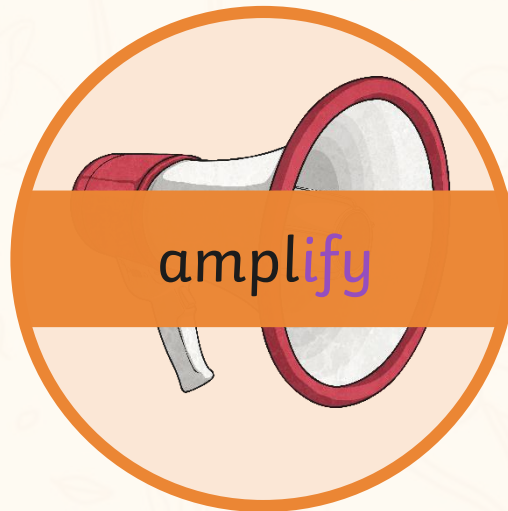
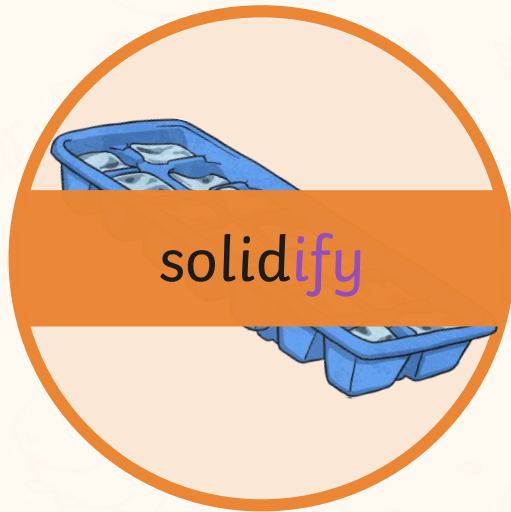


Convert Nouns or Adjectives into Verbs Using the Suffix -ify



This week, we are again looking at how nouns and adjective root words can be changed into verbs using suffixes.

For these week's spellings, we are going to concentrate on using the suffix -ify such as:



Many -ify suffix words are just created by simply adding the -ify suffix to a noun or adjective root word, e.g.

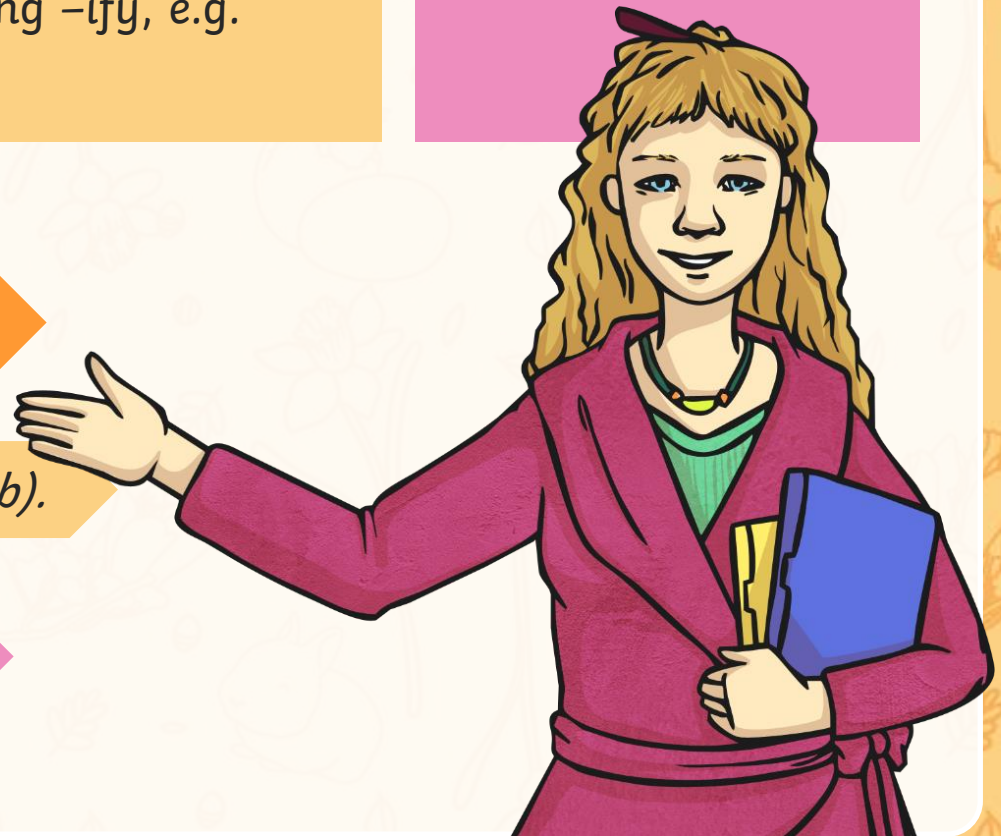
However, sometimes we need to remove the 'e' from the end of noun or adjective root word before adding -ify, e.g.

Root words that end in 'y' also usually remove this letter before adding -ify, e.g.

solid (*noun*) → solidify (*verb*).

ample (*adjective*) → amplify (*verb*).

glory (*noun*) → glorify (*verb*).



**Are you a spelling genius when it comes to this week's
-ify spelling words?**

Work as a team to play Who Wants to be a Spelling Genius. Can you win
the big points?



Question 1

Which is the correct -ify spelling to fit into this sentence?

During the biology lesson, the children had to _____ the types of animals.



Incorrect Answer



Incorrect Answer



Correct Answer!



Incorrect Answer



Question 2

Which is the correct -ify spelling to fit into this sentence?

The athlete needed to _____ his training regime if he was going to make to the Olympic Games.



Incorrect Answer



Incorrect Answer



Correct Answer!



Incorrect Answer



Question 3

Which is the correct -ify spelling to fit into this sentence?

In the Crown Court, the nervous witness had to _____ against the criminal.



Correct Answer!



Incorrect Answer



Incorrect Answer



Incorrect Answer



Question 4

Which is the correct -ify spelling to fit into this sentence?

“Please could you _____ us if you wish to cancel your booking?”
asked the receptionist politely.



Correct Answer!



Incorrect Answer



Incorrect Answer



Incorrect Answer



Question 5

Which is the correct -ify spelling to fit into this sentence?

“We praise thee, we bless thee, we worship thee, we _____ thee,”
cried the priest during the service.



Incorrect Answer



Incorrect Answer



Incorrect Answer



Correct Answer!



Question 6

Which is the correct -ify spelling to fit into this sentence?

The unruly investigator had been caught red-handed trying to _____ the evidence.



Incorrect Answer



Incorrect Answer



Correct Answer!



Incorrect Answer



Question 7

Which is the correct -ify spelling to fit into this sentence?

The spokesperson used a loudspeaker to _____ his voice for the crowds.



Correct Answer!



Incorrect Answer



Incorrect Answer



Incorrect Answer



Question 8

Which is the correct -ify spelling to fit into this sentence?

The melted chocolate quickly began to _____ when it was back in room temperature.



Correct Answer!



Incorrect Answer



Incorrect Answer



Incorrect Answer



Question 9

Which is the correct -ify spelling to fit into this sentence?

White doves are often used to _____ peace and love.



Incorrect Answer



Incorrect Answer



Correct Answer!



Incorrect Answer



Points

100 000

50 000

10 000

5000

2000

1000

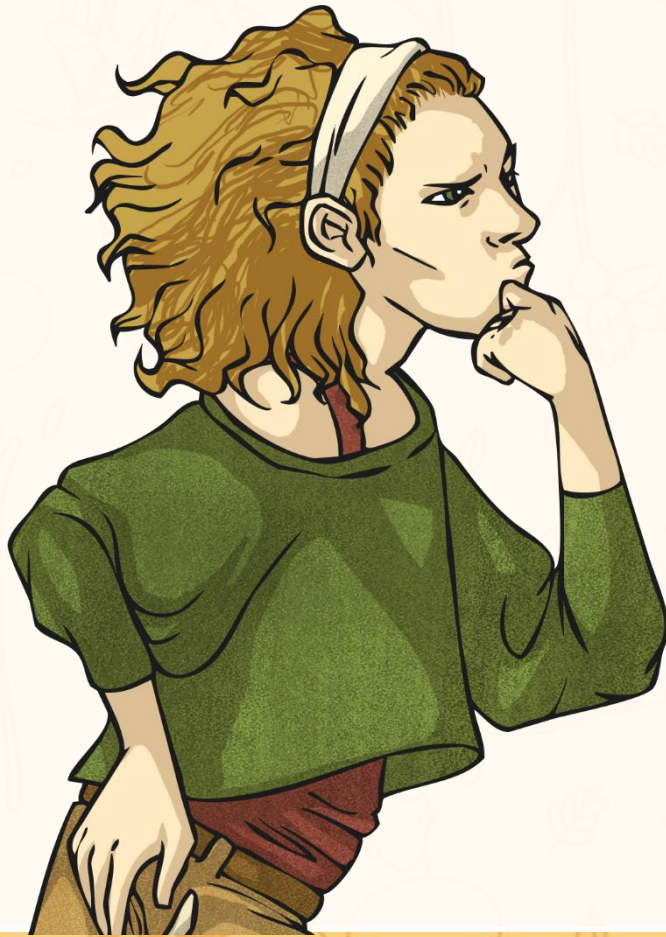
500

200

100



Here are your spelling words for this week.



Week 5
Convert nouns
or adjectives
into verbs using
the suffix -ify

amplify

solidify

signify

falsify

glorify

notify

testify

purify

intensify

classify

[twinkl.co.uk](https://www.twinkl.co.uk)

