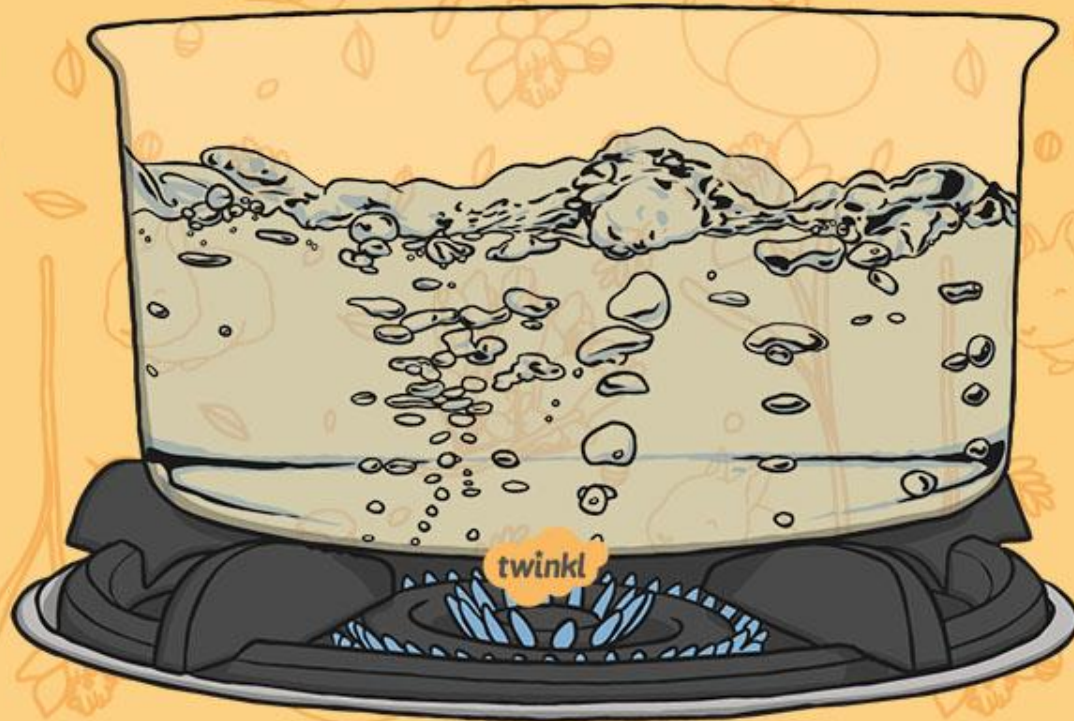
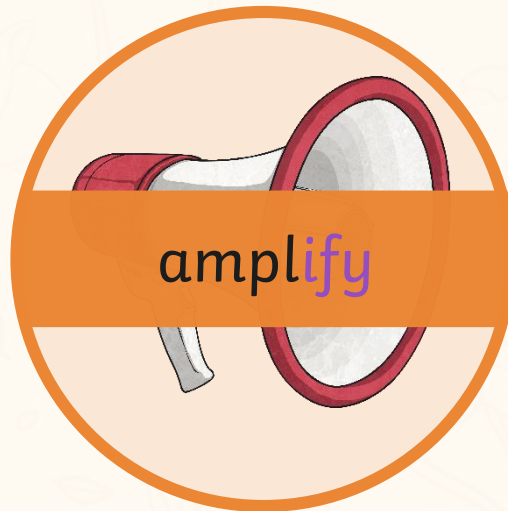
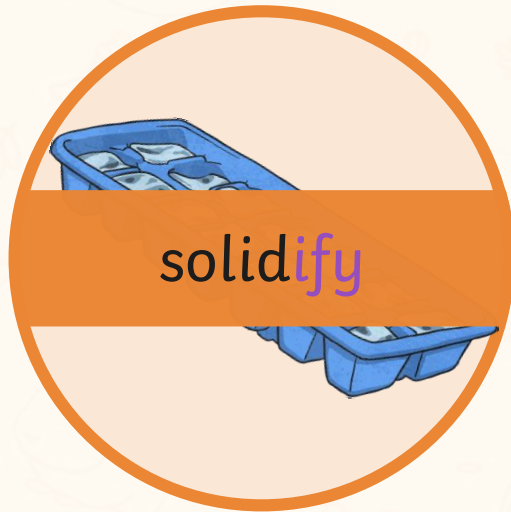


Convert Nouns or Adjectives into Verbs Using the Suffix -ify



This week, we are again looking at how nouns and adjective root words can be changed into verbs using suffixes.

For these week's spellings, we are going to concentrate on using the suffix -ify such as:



Many -ify suffix words are just created by simply adding the -ify suffix to a noun or adjective root word, e.g.

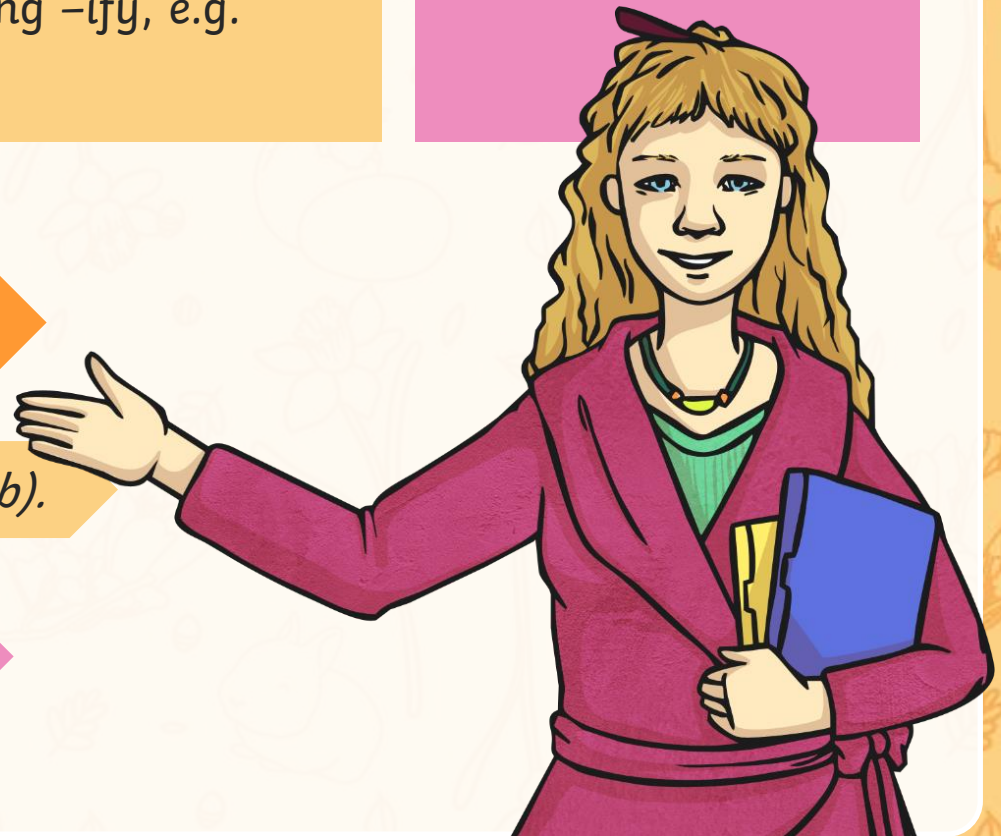
However, sometimes we need to remove the 'e' from the end of noun or adjective root word before adding -ify, e.g.

Root words that end in 'y' also usually remove this letter before adding -ify, e.g.

solid (*noun*) → solidify (*verb*).

ample (*adjective*) → amplify (*verb*).

glory (*noun*) → glorify (*verb*).



Are you a spelling genius when it comes to this week's
-ify spelling words?

Play Who Wants to be a Spelling Genius.



Question 1

Which is the correct -ify spelling to fit into this sentence?

During the biology lesson, the children had to _____ the types of animals.

A

clasify

C

classiffy

B

classify

D

classefy



Question 2

Which is the correct -ify spelling to fit into this sentence?

The athlete needed to _____ his training regime if he was going to make to the Olympic Games.

A

intenseify

C

intenssify

B

intensify

D

intinsify



Question 3

Which is the correct -ify spelling to fit into this sentence?

In the Crown Court, the nervous witness had to _____ against the criminal.

A

testify

C

testtify

B

testeify

D

tesstify



Question 4

Which is the correct -ify spelling to fit into this sentence?

“Please could you _____ us if you wish to cancel your booking?”
asked the receptionist politely.

A

notify

C

noteify

B

nottify

D

nootify



Question 5

Which is the correct -ify spelling to fit into this sentence?

“We praise thee, we bless thee, we worship thee, we _____ thee,”
cried the priest during the service.

A

gloryify

C

glourify

B

glorrrify

D

glorify



Question 6

Which is the correct -ify spelling to fit into this sentence?

The unruly investigator had been caught red-handed trying to _____ the evidence.

A

falssify

C

falseify

B

falsify

D

faulsify



Question 7

Which is the correct -ify spelling to fit into this sentence?

The spokesperson used a loudspeaker to _____ his voice for the crowds.

A

amplify

C

ammplify

B

ampplify

D

ampleify



Question 8

Which is the correct -ify spelling to fit into this sentence?

The melted chocolate quickly began to _____ when it was back in room temperature.

A

solidify

C

soliddify

B

sollidify

D

solidiffy



Question 9

Which is the correct -ify spelling to fit into this sentence?

White doves are often used to _____ peace and love.

A

cignify

C

siggify

B

signify

D

ciggify



Here are your spelling words for this week.



amplify

solidify

signify

falsify

glorify

notify

testify

purify

intensify

classify

[twinkl.co.uk](https://www.twinkl.co.uk)