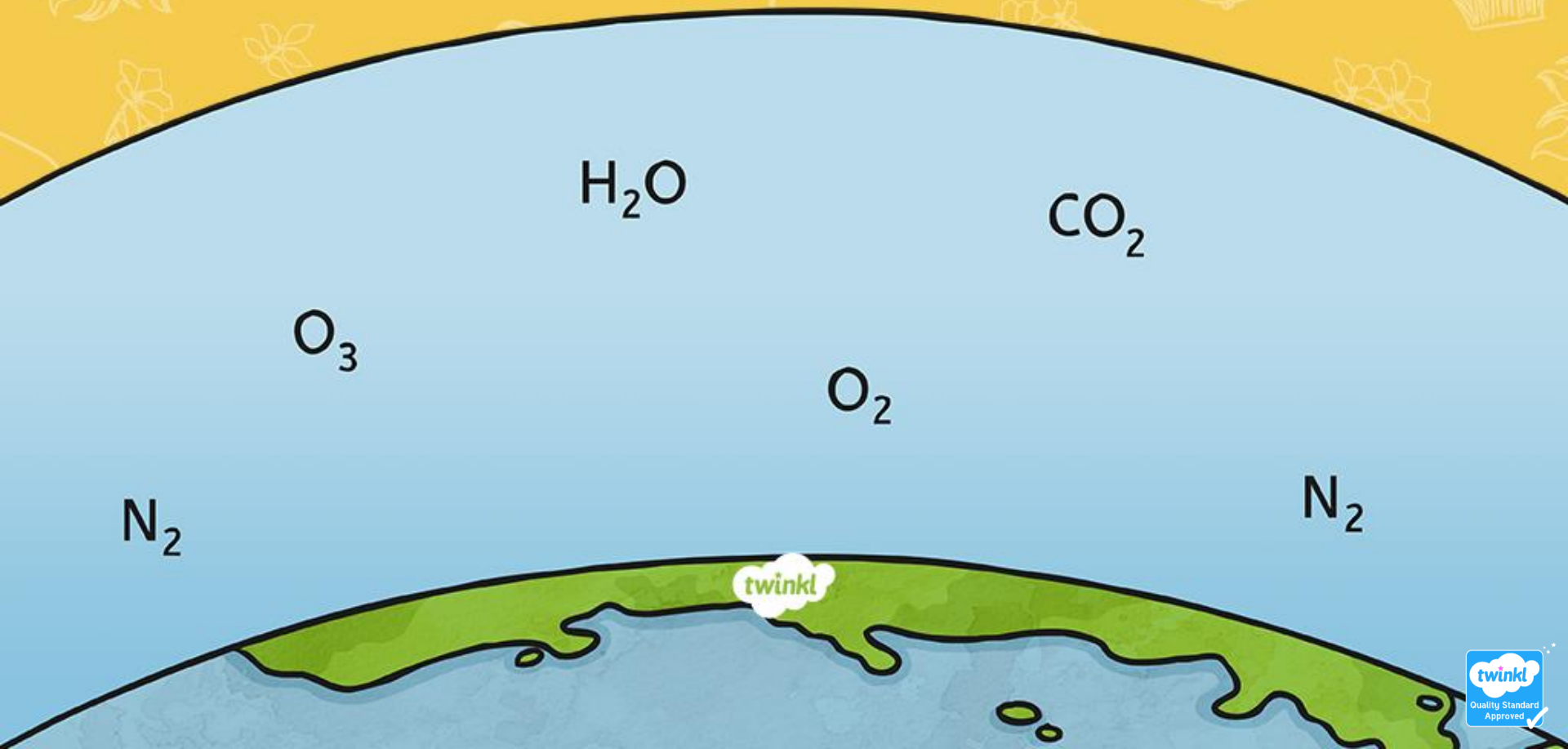


# Words with /ear/ Sound Spelt with 'ere'

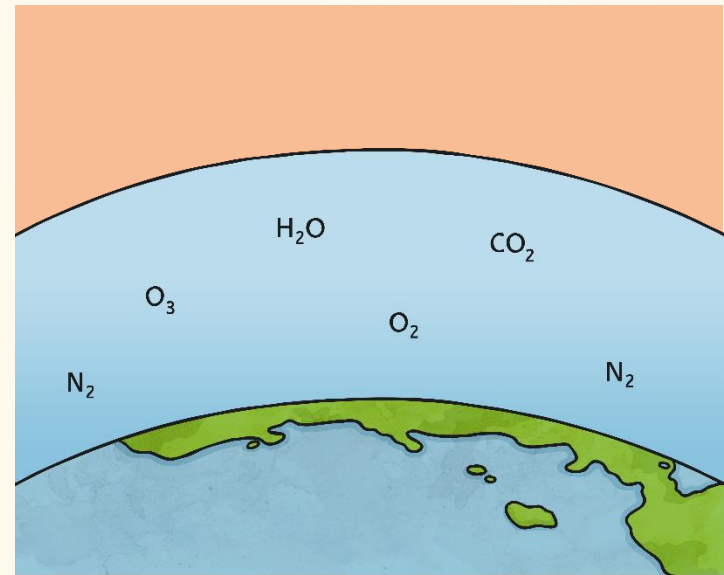


This week, we are going to look at words that have an /ear/ sound spelt using 'ere'. This letter pattern usually appears at the end of words like:



**sphere**

or



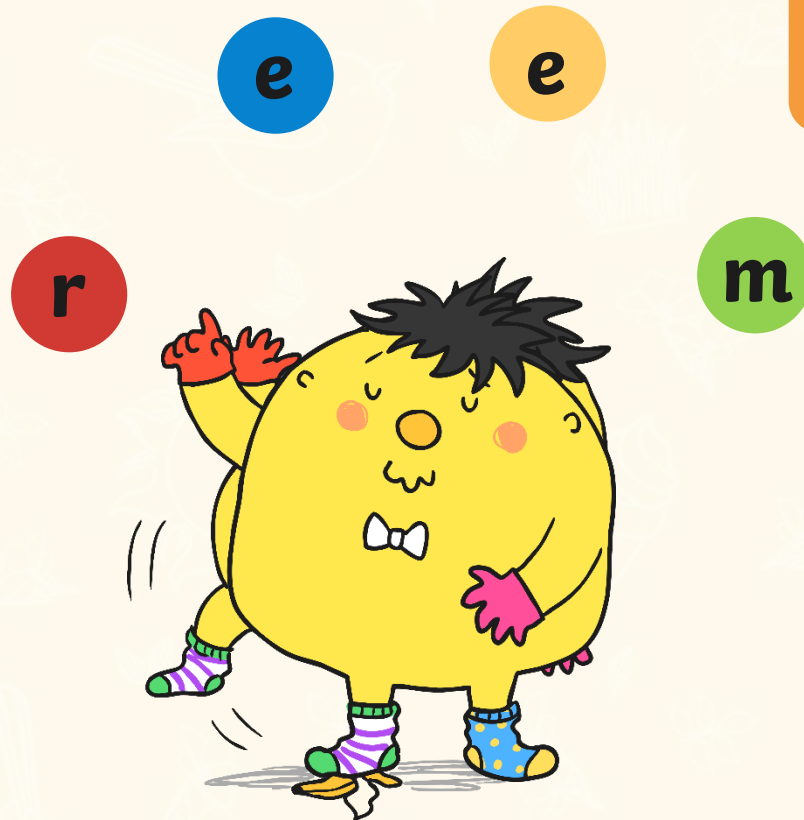
**atmosphere**

We'll start by practising these challenge words by trying to help out Mr Whoops...

Unfortunately, Mr Whoops has got in a bit of a muddle with your spelling words. Working with a partner, can you figure them out?

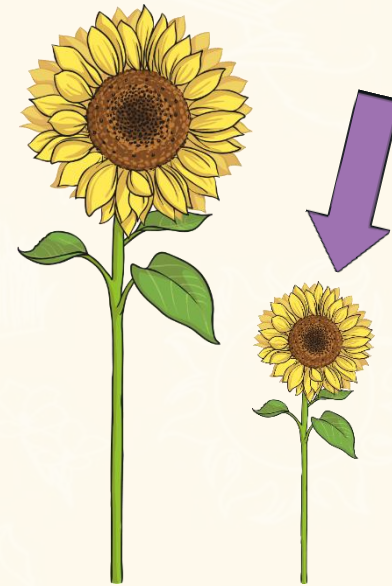
Remember they all contain an /ear/ sound spelt with 'ere'.

[Click here for clue!](#)



The answer is...

m e r e



Mere – to emphasis how small or insignificant something is.



Unfortunately, Mr Whoops has got in a bit of a muddle with your spelling words. Working with a partner, can you figure them out?

Remember they all contain an /ear/ sound spelt with 'ere'.

[Click here for clue!](#)



The answer is...

s i n c e r e



Sincere – to come from genuine feelings.

Unfortunately, Mr Whoops has got in a bit of a muddle with your spelling words. Working with a partner, can you figure them out?

Remember they all contain an /ear/ sound spelt with 'ere'.

[Click here for clue!](#)



The answer is...

i n t e r f e r e



Interfere – to prevent something from happening.



Unfortunately, Mr Whoops has got in a bit of a muddle with your spelling words. Working with a partner, can you figure them out?

Remember they all contain an /ear/ sound spelt with 'ere'.

[Click here for clue!](#)



The answer is...

a d h e r e

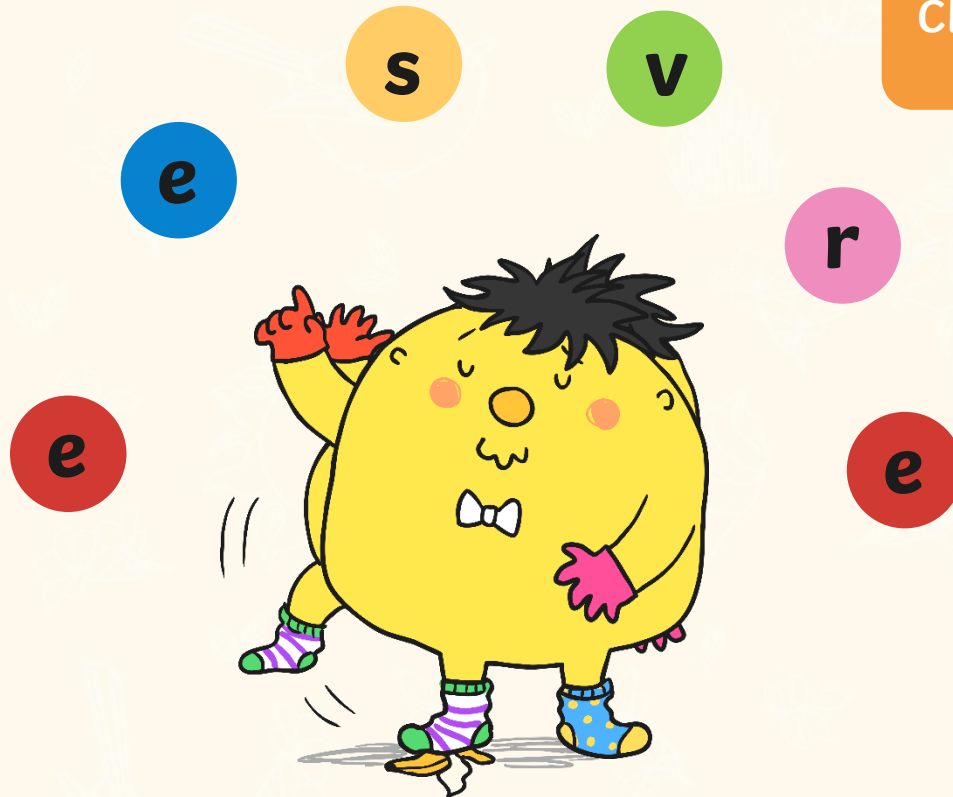


adhere – to stick to something

Unfortunately, Mr Whoops has got in a bit of a muddle with your spelling words. Working with a partner, can you figure them out?

Remember they all contain an /ear/ sound spelt with 'ere'.

[Click here for clue!](#)



The answer is...

s e v e r e



**Severe** – something bad or undesirable



Unfortunately, Mr Whoops has got in a bit of a muddle with your spelling words. Working with a partner, can you figure them out?

Remember they all contain an /ear/ sound spelt with 'ere'.

[Click here for clue!](#)



The answer is...

p e r s e v e r e



Persevere – to continue, even in the face of difficulty

Unfortunately, Mr Whoops has got in a bit of a muddle with your spelling words. Working with a partner, can you figure them out?

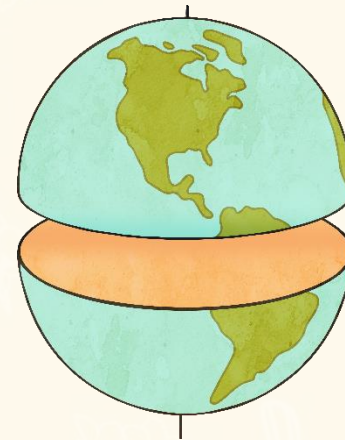
Remember they all contain an /ear/ sound spelt with 'ere'.

[Click here for clue!](#)



The answer is...

h e m i s p h e r e



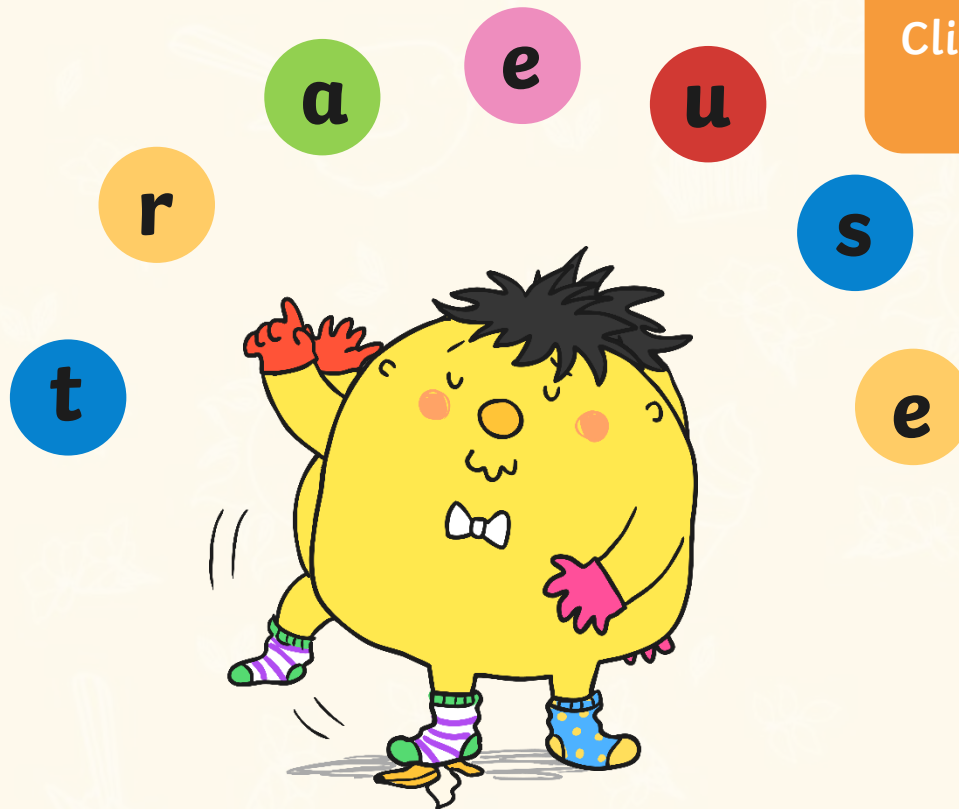
Hemisphere – a half of a sphere



Unfortunately, Mr Whoops has got in a bit of a muddle with your spelling words. Working with a partner, can you figure them out?

Remember they all contain an /ear/ sound spelt with 'ere'.

[Click here for clue!](#)



The answer is...

a u s t e r e



austere – having no comforts or luxuries

Here are all your spelling words for this week.  
Work hard to practise these /ear/ words spelt with 'ere'.



sincere

interfere

sphere

adhere

severe

persevere

atmosphere

mere

hemisphere

austere

