

The image is split vertically. The left half features a bright yellow sun with rays emanating from a central white circle, set against a light yellow background. The right half is a solid dark grey or black background. The title 'Light and Dark' is written in a bold, yellow, sans-serif font with a black outline, centered across the middle of the image.

Light and Dark

What Is Light?

- Can you name some things that give out light?
- How does light help us to see?
- What is dark?
- How do mirrors work?
- What is reflection?
- How are shadows made?

This unit of work is all about light.

You will find the answers to all these questions, and more!



What Is Light?

What do you already know?

Create a mind map to show what you already know about light.

Can you think of any questions you would like to find out about light?

Light Source Sorting Game



Can you sort the set of cards?

Identify the cards that are sources of light, and which ones are not.

Can you explain your reasons?

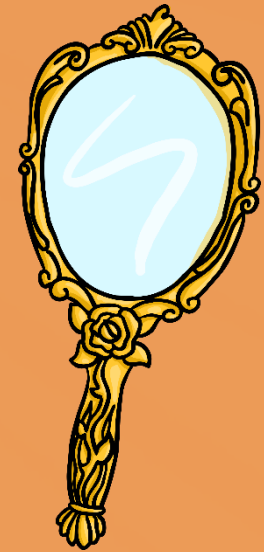


Light Source Sorting Game

The Tricky Ones!

Some of the cards were tricky to sort - the moon, the window and the mirror are some examples.

These objects look like light sources, but they are not!



Light Source Sorting Game

The Tricky Ones!

The moon is not a light source because it does not make its own light.
We can see the moon because light from the sun reflects off it
(bounces off it) back to the earth.



Light Source Sorting Game

The Tricky Ones!

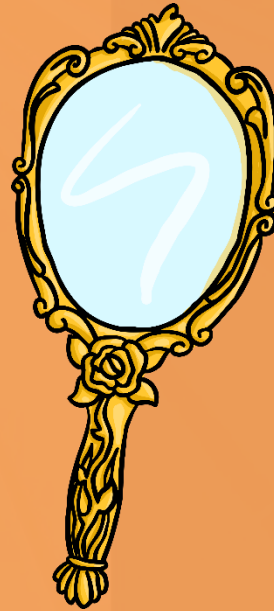
The window is not a light source. It is an opening that lets the light from the sun or other light source into the room.



Light Source Sorting Game

The Tricky Ones!

The mirror is not a source of light because it does not make its own light.
It reflects light from other sources.



What Is Dark?

Dark is the absence of light.

If there is no light from a light source, it will be dark.

Think about times when it is dark, or places where it is dark. Which sources of light are absent, or switched off?

Can we see in the dark?